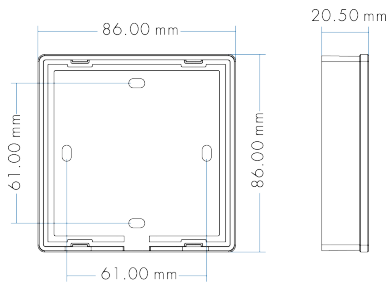


# RGBW+WW (RGB+CCT) Multi-Colour Touch Panels



## T25 Wireless Touch Panel RGBW+WW (RGB+CCT) 4 Zone

- High strength glass touch panel with touch colour slide in middle
- Application: Surface mount, wireless panel
- 4 Zone panel, for independent control. Can be paired to multiple receivers
- Multiple scenes preset function
- Finish/Colour: White, Black
- Dimensions: 86mmW x 86mmH x 20.5mmD
- IP20, non-waterproof
- Power AAA battery (2pc) (included)
- Used in conjunction with V5-M controller

**T25-BK** (black) **T25-WH** (white)

# Wall Mounted Touch Panel

Model No.: T21, T22, T24, T25

4 Zone/1-5 color/Glass touch panel/Color slide/Wireless remote 30m distance/AAA x 2 battery



T21  
4 Zone dimming



T22  
4 Zone CCT



T24  
4 Zone RGB/RGBW



T25  
4 Zone RGB+CCT

## Features

- Touch panel 4 zone 1-5 color RF remote.
- Each zone can remote control multiple RF 2.4G LED controllers.
- Ultra sensitive high strength glass touch panel with touch color slide in the middle.
- Smooth and accurate color adjustment by touching the color slide.
- Touch keys with chord tones and LED indicator.
- Free installation, no wiring, removable.
- AAA x 2 battery powered.
- White & Black glass panel available.

CE RoHS EMC LVD RED

## Technical Parameters

Input and Output	
Output signal	RF(2.4GHz)
Working voltage	3VDC(AAA x 2)
Working current	< 5mA(Without tune) < 20mA(with tune)
Standby current	< 20µA
Standby time	1 year
Remote distance	30m (Barrier-free space)

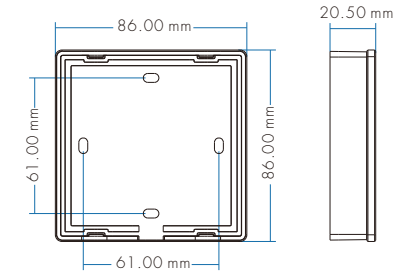
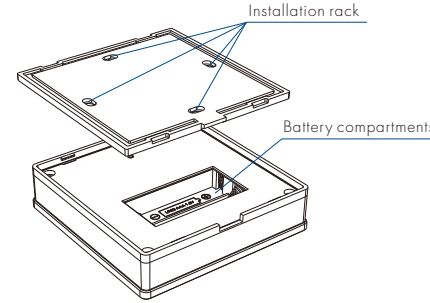
Environment	
Operation temperature	Ta: -30°C ~ +55°C
Case temperature (Max.)	Tc: +65°C
IP rating	IP20

Safety and EMC	
EMC standard (EMC)	ETSI EN 301 489-1 V2.2.3 ETSI EN 301 489-17 V3.2.4
Safety standard(LVD)	EN 62368-1:2020+A11:2020
Radio Equipment(RED)	ETSI EN 300 328 V2.2.2
Certification	CE,EMC,LVD,RED

Warranty	
Warranty	5 years

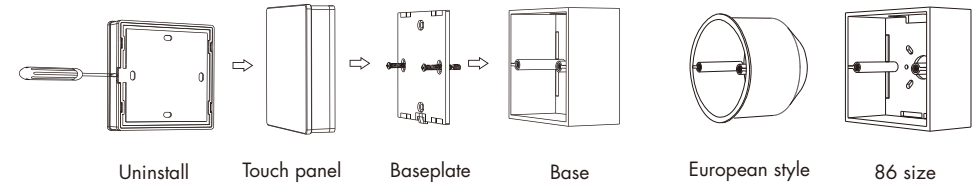
Weight	
Net weight	156g
Gross weight	192g

## Mechanical Structures and Installations



Installation diagram:

Typical base as below:



To fix the panel, two options are offered for selection:

- Option 1: fix it on the wall with two screws.
- Option 2: adhere it to the wall with paster.

## Match with RF LED controller (two match ways)

End user can choose the suitable match/delete ways. Two options are offered for selection:

### Use the controller's Match key

Match:  
Short press match key, immediately press zone key of the touch panel.

The LED indicator fast flash a few times means match is successful.

Delete:  
Press and hold match key for 5s to delete all match. The LED indicator fast flash a few times means all matched remotes were deleted.

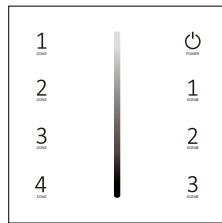
### Use Power Restart

Match:  
Switch off the power of the receiver, then switch on power, repeat again.  
Immediately short press zone key 3 times on the touch panel. The light blinks 3 times means match is successful.

Delete:  
Switch off the power of the receiver, then switch on power, repeat again.  
Immediately short press zone key 5 times on the touch panel. The light blinks 5 times means all matched remotes were deleted.

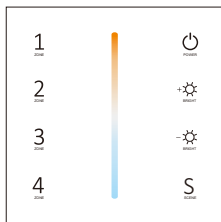
## Key function

### T21 Single color panel



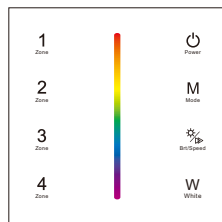
- Turn on/off all zone light.
- Brightness slide.
- Short press recall scene. Long press 2s to save the current state into 1/2/3.
- Short press turn on zone light and select zone simultaneously, long press 2s turn off zone light. Short press multiple zone key fastly, will select multiple zone synchronously. 4 zone control separately or synchronously, each zone could control multiple receivers.

### T22 Dual color panel



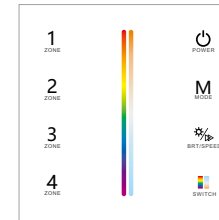
- Turn on/off all zone light.
- Color temperature.
- Brightness +, 10 levels.
- Brightness -, 10 levels.
- Short press recall scene. Long press 2s to save the current state into the scene.
- Short press turn on zone light and select zone simultaneously, long press 2s turn off zone light. Short press multiple zone key fastly, will select multiple zone synchronously. 4 zone control separately or synchronously, each zone could control multiple receivers.

### T24 RGBW panel



- Turn on/off all zone light.
- Color slide.
- Short press play 10 built-in mode, long press run mode-cycle.
- Adjust dynamic mode speed or static color brightness, 10 levels.
- Short press turn on/off W channel, long press adjust W channel brightness.
- Short press turn on zone light and select zone simultaneously, long press 2s turn off zone light. Short press multiple zone key fastly, will select multiple zone synchronously. 4 zone control separately or synchronously, each zone could control multiple receivers.

### T25 RGB+CCT panel



- Turn on/off all zone light.
- RGB color / Color temperature slide.
- Switch between RGB color / Color temperature slide.
- Short press play 10 built-in mode, long press run mode-cycle.
- Adjust dynamic mode speed or static color brightness, 10 levels.
- Short press turn on zone light and select zone simultaneously, long press 2s turn off zone light. Short press multiple zone key fastly, will select multiple zone synchronously. 4 zone control separately or synchronously, each zone could control multiple receivers.

**Note:** After touch power key to turn off light, long press power key for 5 seconds will turn on or turn off tone.

## Safety information

1. Read all instructions carefully before you begin this installation.
2. When installing battery, pay attention to the battery positive and negative polarity. A long time without the remote control, remove the battery. When remote distance becomes smaller and insensitive, replace the battery.
3. If no response from the receiver, please re-match the remote.
4. Gently handle remote, beware of falling.
5. For indoor and dry location use only.