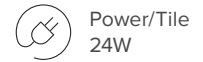


FT5050 RGBW Flex Tile



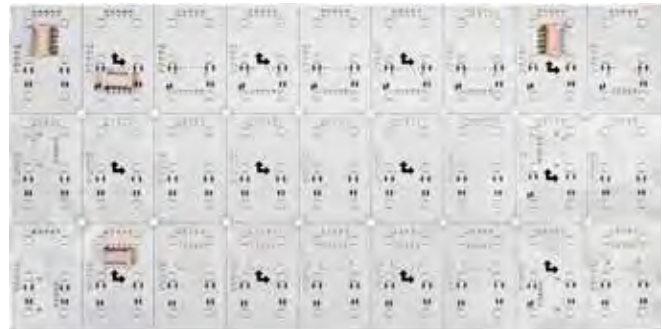
Modular LED tile panels ideal for backlighting, producing a high quality, uniform light source.

High LED density allowing for close placement of materials, reducing spacing and potential hotspots.

Flexibility allows for use on curved applications.

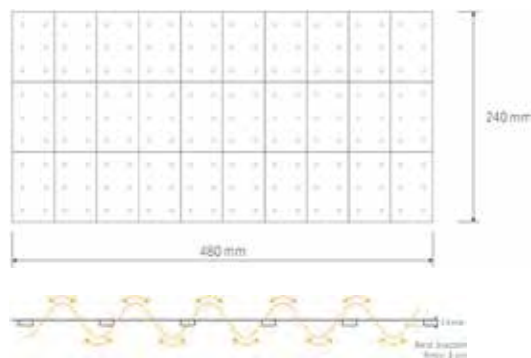
Tile panels can be cut to shape, and joined easily with connectors.

3M double sided self-adhesive backing allows for easy installation on flat or curved surfaces, and can also be screw fixed through the marked circular areas between the cuttable sections.



Features

- LED type: 5050 SMD
- RGBW - 4 colours in one LED including cool white
- Single colour or four colours can be controlled together or separately
- Tile panel size: 480mm x 240mm
- 162 LEDs per tile
- 24 watts per tile
- Cuttable section size: 53.2mm x 80mm
- Maximum connection: 10 tiles per circuit
- CRI 80
- LED beam angle 120°
- Long life span LED light, more than 50,000 hours+
- Operating temperature: -20-50°C
- Switchable, dimmable and colour controllable by using RGBW controller, or Wi-Fi app
- IP20, non-waterproof



Code	Size (mm)	Colour	Cut Every (LEDs)	LEDs/ tile	Lumen/tile	Package
FT5050-RGBW-162-24V	L480xW240	Red	6 (53.2mm x 80mm)	162	1355	1 tile
		Green				
		Blue				
		Cool White				

Compatible Accessories

Power Supply (page 131-135)	24V-60W
	24V-120W
	Other specialist power supplies
Controller (page 115-124)	RGBW Remotes
	RGBW Touch Panels
	VP Controller (Remotes & Touch Panels)
	WT5 Controller (Wi-Fi & Voice Control)
Accessories (page 137-142)	See Accessories page for product details

Optional Components

Code	Description
FT-CABLE-RGBW	RGBW Flex Tile - Power Cable
FT-CONNECT-RGBW	RGBW Flex Tile - Connector

