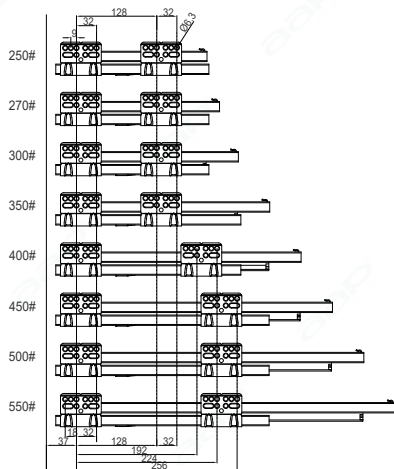
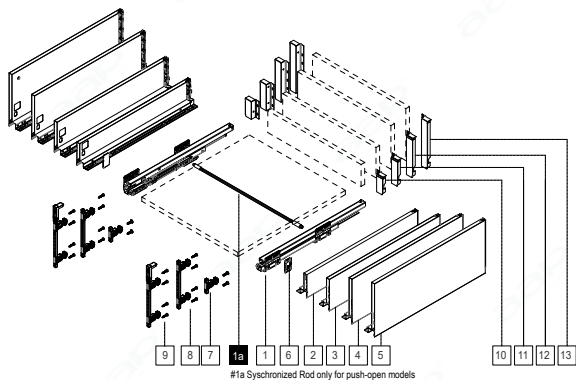
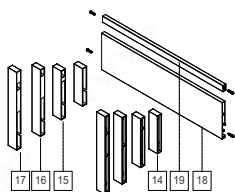


BOX023 / BOX025 BOX027 / BOX028

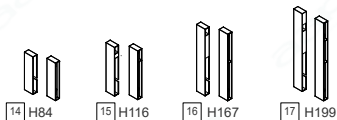


Additional Purchase Required

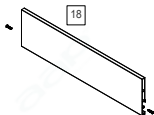
Inner Drawer Panel Accessories



Front Connector 05B.023-FM



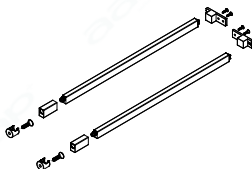
Front Panel 05B.023-FB



Square Railing 05B.023-J



Side Panel Railing 05B.023-GB01

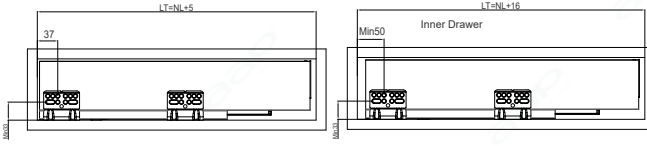




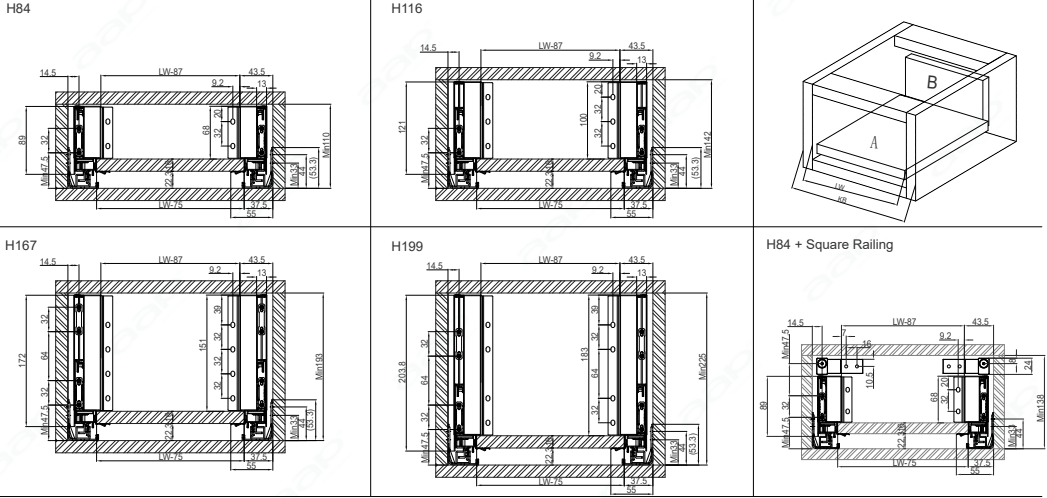
16 mm

Board Thickness

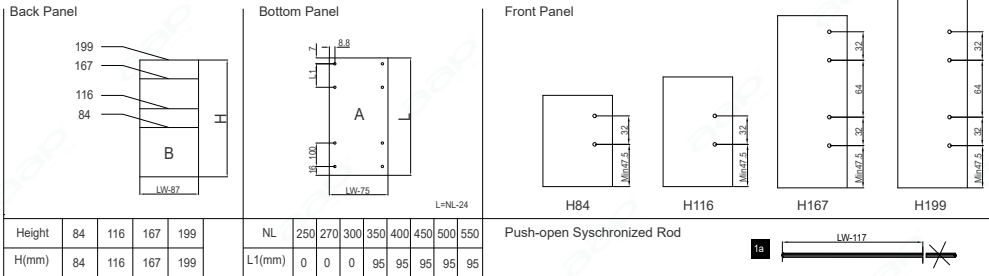
1. Cabinet Size



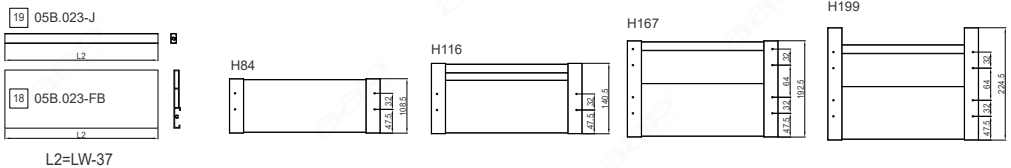
KB = Outer Width Of Cabinet
 LW = Inner Width Of Cabinet
 NL = Nominal Length



2. Material Cutting Dimensions

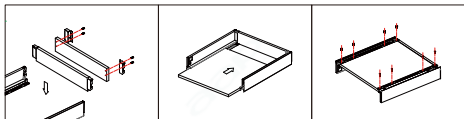


** Inner Drawer Front Panel



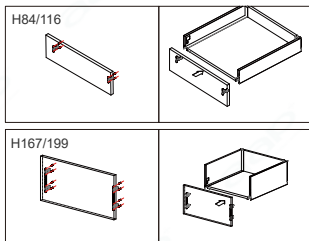


1: Installation Back and Bottom Panel

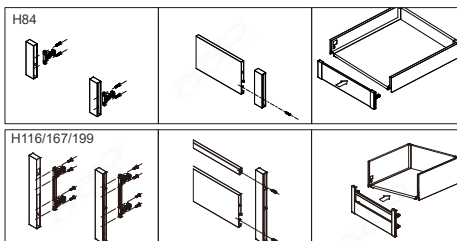


2: Installation Front Panel

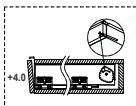
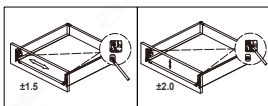
Wood Front Panel



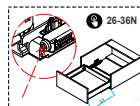
Inner Drawer



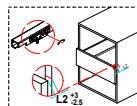
3: Adjustment



only for
BOX025/028

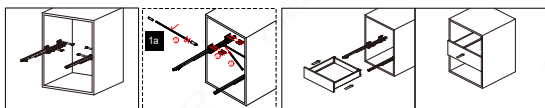


only for
BOX027/028

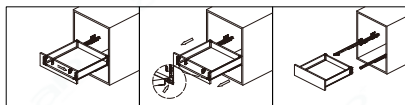


only for
BOX028

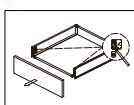
4: Installation Slide and Drawer into Cabinet



5: Drawer Disassembly



6: Front Panel Disassembly

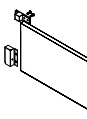


7: Railing for Side Panel if necessary

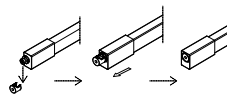
Install The Front Connectors



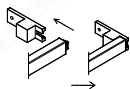
Install The Back Connectors



Install The Front Plug of Railing



Install The Back Plug of Railing



Disassembly

